

**VISION**  
Building learners of tomorrow...

**MISSION**  
To prepare individual learners for success in life, the Platte County School District provides meaningful experiences in a safe and caring environment.

**VALUES**  
Student Focus • Collaboration • High Expectations • Integrity  
Visionary Leadership • Innovation • Results Orientation



# 2023 Annual Report to the Community



## Quality Continuous Improvement Focus



Platte County R-3 School District (PCR-3) is proud to call itself a Quality Continuous Improvement organization. Our District's culture and its strategic plan are guided by the tenets of our foundational elements - our **Vision, Mission, and Values**. PCR-3's strategic plan outlines goals, strategies, and improvements across three strategic focus areas: **Academics, Business, and Community**. Overall goals of each strategic focus area are listed below, and updated results are shown inside, along with updates to our community regarding the end of the 2022-23 and beginning of the 2023-24 school year.

### Academics

**GOAL:** develop and enhance quality educational/instructional programs to improve overall and individual student academic performance

### Business

**GOAL:** proactively and responsibly manage District growth, finances, and support services to improve student achievement

### Community Students

**GOAL:** provide each student with a relevant education in a safe and caring environment

### Community Staff

**GOAL:** attract, retain, and develop a high quality staff

### Community Parents & Members

**GOAL:** improve internal and external stakeholder communication, involvement, and partnership



## A Message to our Pirate Community:

Our commitment to delivering a meaningful and relevant educational experience for each child has paved the way for numerous opportunities, allowing our students to excel. Reflecting on the past 12 months, our school community should take pride in a multitude of accomplishments achieved by our students, as outlined in our "Student Successes and District Highlights."

While celebrating the achievements of our students, it is important to acknowledge the dedicated efforts of our staff. Our instructional team continually refines their expertise through targeted professional development and collaborative efforts. Teachers and school leaders have diligently implemented updated curriculum, emphasizing phonics instruction in early elementary years, and creating engaging learning experiences throughout all grade levels. Daily instruction is enhanced with robust intervention and enrichment strategies. Support staff members maintain safe, clean, and welcoming environments, ensuring that teaching and learning remain the primary focus. PCR-3 employees are a group of dedicated professionals committed to the success and well-being of our students, for which I am personally grateful.

Our thriving schools owe much to a supportive and engaged community. The opening of the Platte Purchase Middle School this fall and the board approval of our community driven 15-year facility master plan are examples of this support. The contributions of parents and community members, who volunteered their time on Community Advisory committees, have been invaluable in providing feedback for school improvement. School families continue to volunteer in our schools, offering support to staff and students.

***It is our committed professionals, hard working students, and engaged community members that provide the winning formula for a quality school system.***

We remain committed to setting high standards, building on our traditions, and forging new pathways for student and staff excellence. While proud of our achievements, we acknowledge there is more work to be done. Our focus remains on creating systems for improvement to ensure our students are prepared for a successful future.

Thank you for believing in Platte County Schools. As always, it's a great time to be a Pirate!

Dr. Jay Harris, Superintendent

### \$2.0M+

Amount of scholarship dollars awarded to PCHS Class of 2023  
Source: student reported scholarship awards, plus A+ scholarship amount



### PORTRAIT OF A GRADUATE

We continue the District's Real World Learning initiative, to ensure meaningful, relevant experiences for students and to give them the essential skills students need to succeed beyond high school, in their careers, and in life:

- Global Citizenship
- Personal Connections
- Self-Awareness
- Problem Solving
- Personal Growth
- Effective Communication

These skills become our "Portrait of a Graduate," which includes a progression of competencies as our students move through PCR-3's preK-12th grade system.

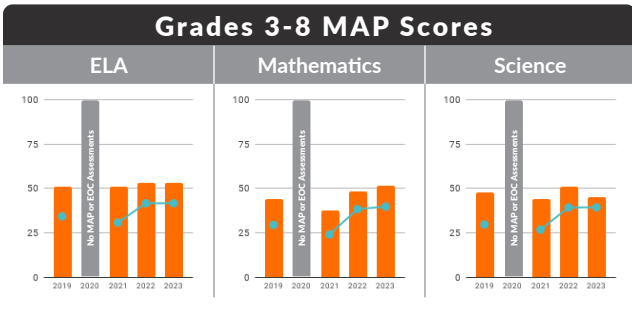


# ACADEMICS

Platte County School District uses a variety of performance measures to ensure student progress toward success in life. Students in grades 3-8 annually take the grade-level Missouri Assessment Program (MAP) assessments in English Language Arts (ELA), Mathematics, and Science (grades 5 and 8). High school students take End-of-Course (EOC) exams upon successful completion of state-designated core content classes. The District's results on these assessments, both in whole and disaggregated into subgroups, combined with college and career readiness, attendance rates, and graduation rates, form the basis for the District's accreditation through the Missouri Department of Elementary and Secondary Education (DESE).

In addition to state assessment results, PCR-3 uses formative assessments, such as the FastBridge Universal Screener and standards-based assessments, to analyze progress in shorter cycles and respond to student needs in a more expeditious, informed approach. Our Class of 2023's ACT average composite score is 21.7, with 63% of the graduating class taking the exam. While entrance requirements are changing, PCR-3 continues to provide students with guidance and assistance toward their post-secondary plans.

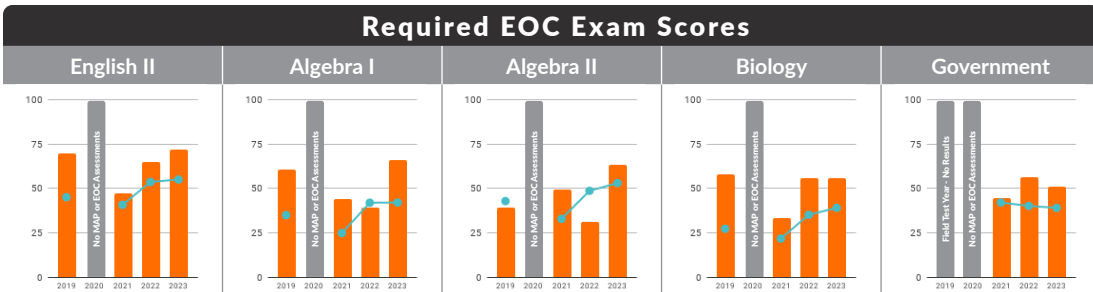
**For more detailed academic results information, visit the District's Performance Results under the Strategic Plan channel at [www.plattecountyschooldistrict.com](http://www.plattecountyschooldistrict.com).**



**Missouri Assessment Program and End-of-Course Exam Scores.** The graphs to the left and below show PCR-3's and the state's percentage of students scoring proficient or advanced in the grade-level MAP and state-required EOCs. Source: DESE.

■ PCR-3  
— State

- In 2019, no Social Studies test results were available because this year was a field test year for Social Studies
- In 2020, no MAP or EOC assessments were given due to the COVID-19 pandemic



### 2023 ACT Results

STATE	PCR-3
<b>20.1</b>	<b>21.7</b>

**Class of 2023 ACT Results.** PCR-3's average composite ACT score for 2023 is 21.7 with 63% of our graduating class taking the exam. The District is continuing its ACT improvement plan which includes student workshops and prep courses, access to online prep materials, pre-ACT testing, and vouchers for students demonstrating preparation. Source: DESE





## BUSINESS

The District has a long standing tradition of fiscal stability. The administration and Board of Education are committed to continuing this level of financial excellence into the future. Aligned to the District's Strategic Plan and long-range facility plan, our efforts will continue to strive for academic excellence while providing all patrons of the District with sound fiscal management to meet future challenges.

### Energy Savings

**67.5**  
kBtu/sf  
BASELINE

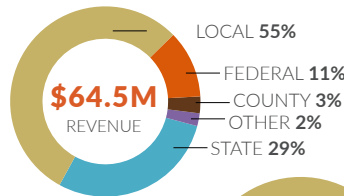
**44.7**  
kBtu/sf  
2022-23

**Energy Savings.** Energy conservation measures were implemented across the District starting in 2016. As a result of these upgrades, effective building management, and ongoing optimization, PCR-3 has captured more than \$3.68M in cost avoidance savings (\$807,000 over projections).

### Tax Levy by District

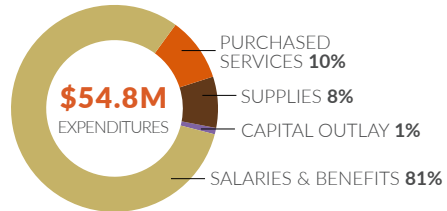
Fort Osage	\$6.3700
Raytown	\$6.3200
Grandview	\$5.9559
Liberty	\$5.9277
Blue Springs	\$5.7286
North Kansas City	\$5.6945
Independence	\$5.4371
Park Hill	\$5.3955
Lee's Summit	\$5.3089
Excelsior Springs	\$5.2262
<b>Platte County</b>	<b>\$5.0193</b>
Grain Valley	\$4.9271
Smithville	\$4.8404
Kearney	\$4.7878
North Platte	\$4.7400
West Platte	\$4.0250

**Tax Levy by District.** The District tax levy has remained the same since 2019, when it was lowered from 5.0439. This rate is applied per \$100 of assessed valuation.  
Source: DESE



**Financial Information.** The figures shown in these graphs do not include expenditures and revenue related to construction projects.

Source: Annual Financial Report



### NORTHLAND WORKFORCE DEVELOPMENT CENTER

Over the last year, Northland Career Center and PCR-3 have raised \$4.6M of the \$30M in public and private funding to match the \$30M award from the State of Missouri to build a new Northland Workforce Development Center. A 19-acre site adjacent to Platte Purchase Middle School was purchased in May. For more information and to donate, visit [northlandcareercenter.org](http://northlandcareercenter.org).



### 15-YEAR FACILITY MASTER PLAN APPROVED

The Long-Range Facility Planning Committee recommended an updated master plan approved by the Board of Education in July, prioritizing facility considerations into 1-5, 6-10, and 11-15 year time frames.

### 2021 BOND PROGRAM PROJECTS COMPLETED

With the opening of **Platte Purchase Middle School** this fall, welcoming 6th-8th grade students in the southern attendance area, and the upgrades to Barry Elementary to become the District's fourth elementary, the 2021 No-Tax-Increase Bond program projects are now complete.

### AA

PCR-3 has a bond rating from Standard & Poor's of "AA" Stable.





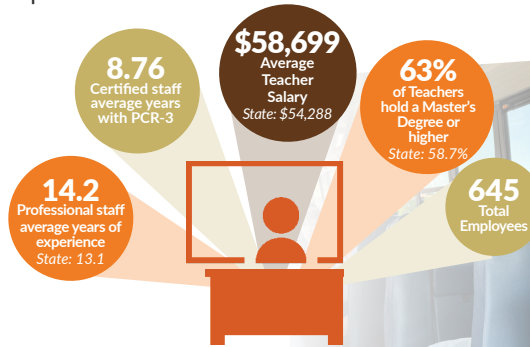
# COMMUNITY Students, Staff, Parents, and Members

The Community focus area of the District's Strategic Plan encompasses goals for students, staff, parents, and community members. The Community-Students goal is to provide each student with a relevant education in a safe and caring environment. The Community-Staff goal is to attract, retain, and develop a high quality staff. The Community-Parents and Members goal is to improve internal and external stakeholder communication, involvement, and partnership.

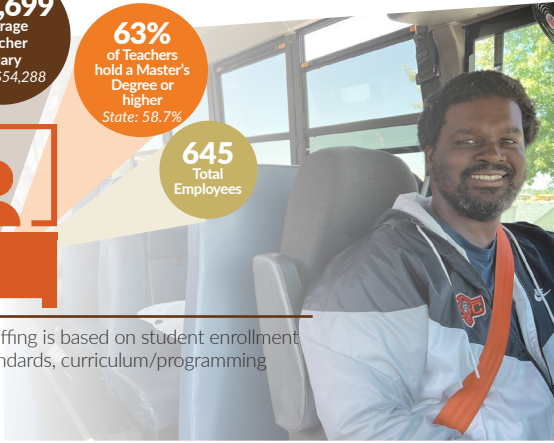
## Getting Ready for School

**110** children served by Parents as Teachers Program  
**74** Early Childhood students  
2022-23 SCHOOL YEAR

**Preparing PCR-3 Learners.** Preparing children for school and life success is a focus at PCR-3, through our Parents as Teachers program as well as our early childhood program, Great Beginnings, located at both the District Education Center and Barry Elementary.



**Staff Information.** Workforce staffing is based on student enrollment numbers, state classroom size standards, curriculum/programming needs, and the District budget.



**APRIL 2024 BALLOT QUESTION**  
A Proposition C Waiver and Levy Transfer question will appear on the April 2, 2024 ballot. This question, if passed, would authorize PCR-3 to increase the Operating tax levy by a total of \$0.35. The District would concurrently reduce the Debt Service levy by \$0.35, resulting in zero tax-rate increase. Restructuring the tax rate will allow the District to allocate resources to better attract and retain quality staff and enhance safety and security.  
**For more detailed information, visit the Prop C Waiver/Levy Transfer page under the Strategic Plan channel at [www.plattecountyschooldistrict.com](http://www.plattecountyschooldistrict.com).**

**80%** of parents say they are a partner with the school in their child's education  
*Source: 2022-23 Annual Parent Survey*

**816** 6<sup>th</sup>-12<sup>th</sup> grade students participated in at least 1 MSHSAA Sport/Activity with an average GPA of 3.54

**200** students were inducted into NHS or NJHS at PCHS, Barry (now PPMS), and PCMS

# PREPARING INDIVIDUAL LEARNERS



## Additional 2023 Student Successes and District Highlights

**THEATRE** 12 Blue Star nominations, including Outstanding Overall Production; Blue Star Award for Outstanding Hair & Makeup Design

**FUTURE BUSINESS LEADERS OF AMERICA** Gold Level Chapter & Seal of Merit, Outstanding Service, 5 State Champions, 19 National qualifiers, Partnership with a Business National finalist

**PIRATE HALL OF FAME** *Phil Dorman, Joyce Hisel, and Dr. Jay Jones* inducted

**GIRLS SWIMMING** Conference Champions, 10 State qualifiers, 200 free school record

**WRESTLING** Seven boys and five girls qualified for State; Two State medalists: *Jake Fernandez and Lilly Brower*

**DANCE** NDA All-American *Avery Lewis*

**DECA** Three State qualifiers

**SPEECH & DEBATE** *April Bobowski and Charlotte Hammond* State medalists; 9 National qualifiers; *Jack Wall, Porter Schoen, and Hammond* Academic All-Americans

**ARCHERY** All teams (elementary, middle and high) qualify for Nationals; PCMS's *Jake Sloan* Bullseye State Champion; PCHS Team score sets new school record

**NORTHLAND CAREER CENTER** Designated a National Pacesetter School for fifth straight year

**BASEBALL** Conference Champions

**NATIONAL HONOR SOCIETY** 71 new inductees

**ALL-STATE SHOW CHOIR** Eight students selected

**STAFF RECOGNITION** Siegrist's *Kristie Simon* named Christa McAuliffe winner; PCHS's *Heather Brown* named NWMSCA Secondary School Counselor of the Year; PCHS Library achieves state Exemplary Status; PCHS's *Jerri Spores* receives Distinguished Friend of Prevention award; NCC's *Megan Drummond* MCCTA Assistant Administrator of the Year

**ROBOTICS** *Barry Team 78877A* and *PCHS Team 9065S* won State Championship; Four middle school and two PCHS teams qualified for Worlds

**TRACK & FIELD** Girls Conference Champions; eight events qualify for State; four school records broken

**PROJECT LEAD THE WAY**

**ENGINEERING** Seven State Champions; Best of Show in Robotics

**BOYS GOLF** *Parker Amos* qualified for State

**SPECIAL OLYMPICS** 20 gold medals

**SKILLSUSA** 10 National competitors

**TEACHER/SERVICE PERSON OF THE YEAR** *Jim Hanway* and *Marci Fine* recognized as PCR-3's Teacher and Service Person of the Year, respectively

**BOYS TENNIS** District Champions for the first time; five State qualifiers

**BOYS SWIMMING** Two State medalists: *Deacon Gutshall and Palmer Keith*; three school records broken

**VOLLEYBALL** District Champions

**SOFTBALL** District Runners Up

**PERFECT ACT** PCHS Senior *Daniel Bunge* scored a perfect 36 on the ACT

**NATIONAL MERIT FINALISTS** PCHS Seniors *Alex Beeman* and *Daniel Bunge*

**GIRLS TENNIS** District Champions for the first time; Two doubles teams qualified for state

**GIRLS GOLF** Three qualified for State; *Ella Green* sets low round record

**CROSS COUNTRY** Boys 2nd at State, State medalists: *Andrew Johnson* (Conference Champion, school record), *Kade Meinke, Tanner Jenks, Blake Herron*; Girls 10th at State, Conference Champions, State medalists: *Sisley Mitchell* (Conference Champion, school record), *Carmen Gentilla*

**MARCHING BAND** Multiple 1st and 2nd place finishes, several caption awards, and two Grand Championship trophies

**CHEERLEADING** Placed 3rd at State

**ALL-STATE CHILDREN'S CHOIR** *Easton Bankey* and *Thad Willson* selected

**JOURNALISM** Yearbook Gallery of Excellence award; 12 Scholastic honors

**STUDENT COUNCIL** PCHS hosted more than 1,300 students for District event

**ALL-STATE CHOIR** 15 students selected

**ALL-STATE BANDS** 5 students selected

**ASPIRING ENTREPRENEURS** *EmmaLyn Burnett, Lucy McClain, and Katherine Morgan* selected for inaugural award

**PIRATES ROCK** 92 PCHS seniors pledged to promote healthy choices and good character to PCR-3 elementary and middle school students



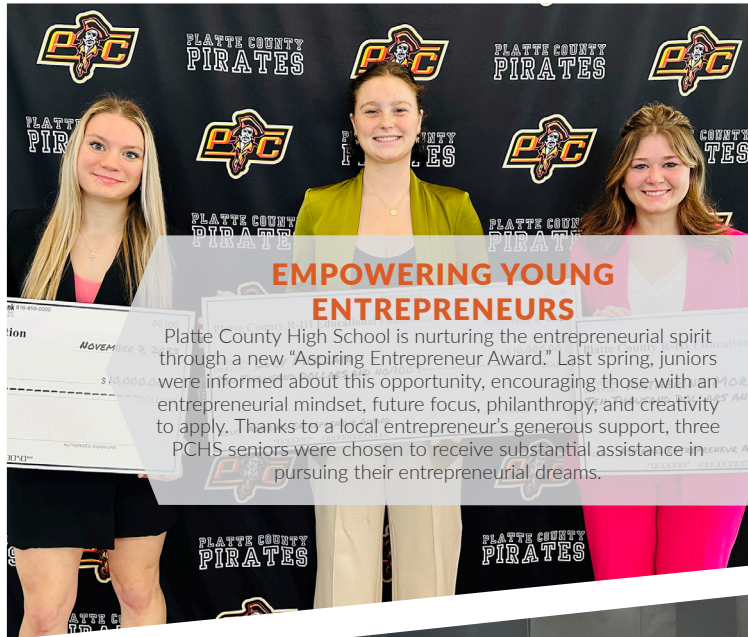
# PROVIDING MEANINGFUL EXPERIENCES

# FOR SUCCESS IN LIFE



## CREATING REAL WORLD EXPERIENCES

• In February, PCHS's Apartment 20 opened, as the life skills classroom was remodeled to simulate a real apartment. • In March, the Pirate Store opened, with PCHS's Retailing students managing the operation from merchandising to sales. • In April, Common Grounds opened, with PCHS's Entrepreneurship students running the shop, serving smoothies, frappes, and Roasterie coffees to customers during 1<sup>st</sup> and 2<sup>nd</sup> hours each day.



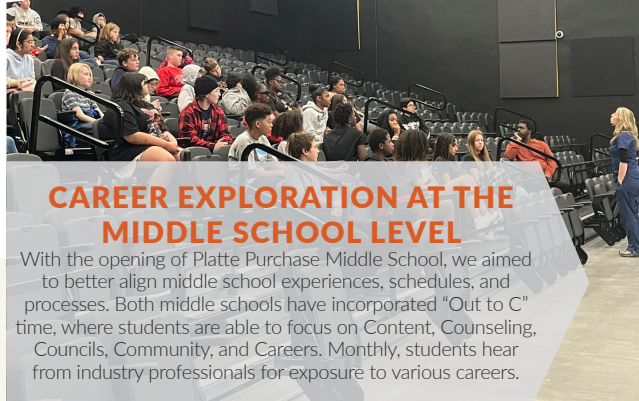
## EMPOWERING YOUNG ENTREPRENEURS

Platte County High School is nurturing the entrepreneurial spirit through a new "Aspiring Entrepreneur Award." Last spring, juniors were informed about this opportunity, encouraging those with an entrepreneurial mindset, future focus, philanthropy, and creativity to apply. Thanks to a local entrepreneur's generous support, three PCHS seniors were chosen to receive substantial assistance in pursuing their entrepreneurial dreams.



## CONTINUED FOCUS ON CHARACTER & LEADERSHIP

We entered our 18th year focusing on character through the Pirates ROCK (Raising Outstanding Character Kids) program, along with the Leader in Me and Character Strong programs. With community, staff, parent, and business support, we focus on and recognize examples of exemplary character and leadership.



## CAREER EXPLORATION AT THE MIDDLE SCHOOL LEVEL

With the opening of Platte Purchase Middle School, we aimed to better align middle school experiences, schedules, and processes. Both middle schools have incorporated "Out to C" time, where students are able to focus on Content, Counseling, Councils, Community, and Careers. Monthly, students hear from industry professionals for exposure to various careers.



# IN A SAFE AND CARING ENVIRONMENT



# Platte County

TRADITION. PRIDE. VISION.

*Paid for by:*

**Platte County R-3 School District**  
**Dr. Jay Harris, Superintendent**  
 998 Platte Falls Road  
 Platte City, Missouri 64079



**Follow us @PlatteCountyR3!**  
 Stay up to date on school news by following PCR-3 on Twitter, Instagram, and Facebook

### ELEMENTARY SCHOOLS

Barry Elementary (K-5)  
 Compass Elementary (K-5)  
 Pathfinder Elementary (K-5)  
 Siegrist Elementary (K-5)

### SECONDARY SCHOOLS

Platte City Middle School (6-8)  
 Platte Purchase Middle School (6-8)  
 Platte County High School (9-12)

### OTHER SCHOOLS

Great Beginnings Early Childhood  
*(at District Education Center & Barry)*  
 Northland Career Center

## JOIN US! Upcoming PCR-3 Events

**JANUARY 23**  
 Hall of Fame Inductions/  
 Athletic Signing Ceremony

**FEBRUARY 15**  
 Spring Parent/Teacher  
 Conferences

**FEBRUARY 22**  
 School Board Meeting

**FEBRUARY 27**  
 April Election  
 Informational Meeting

**MARCH 13**  
 April Election  
 Informational Meeting

**MARCH 14**  
 School Board Meeting

**MARCH 13-15**  
 PCHS Spring Play

**APRIL 18**  
 School Board Meeting

**APRIL 19 & 20**  
 Middle School Musical

**APRIL 22**  
 Kindergarten Kickoffs

**APRIL 26**  
 Pirates ROCK End-of-Year  
 Celebration

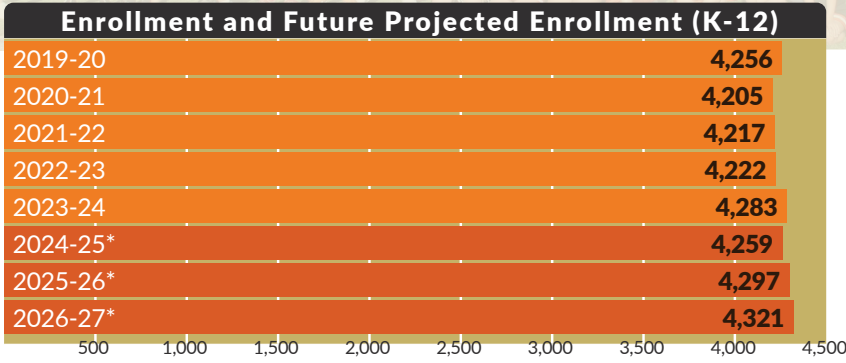
**MAY 3-17**  
 PCHS Art Exhibition

**MAY 3**  
 PCHS Drum! Show

**MAY 8**  
 PCHS Spring Choir  
 Concert

**MAY 9**  
 PCHS Spring Band  
 Concert

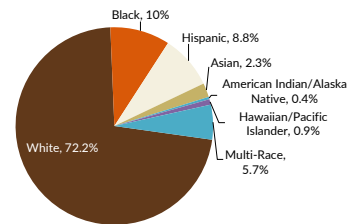
**MAY 10**  
 PCHS Evening of Jazz



**Enrollment and Future Projected Enrollment (K-12th Grade).** PCR-3's 2023-24 enrollment is 4,283 K-12 students (4,376 including PreK), as of the official count date (the last Wednesday in September). This equates to a 1.4% increase over last year's enrollment.

\*Latest enrollment projections in dark orange bars provided by RSP & Associates.

### Student Demographics



**Student Demographics.** Thirty-seven languages are reported as spoken at home, and 20.5% of students are eligible for free or reduced priced lunch (State: 47.4%) Source: DESE